

# AJF

## **SPM JIGS & FIXTURE MANUFACTURING INDUSTRY**

Automation Box build Line, E-Vehicle Assembly Line, Automation Fixture, Testing Fixture, EOL Testing Fixture, Hi-Pot Testing Fixtures, Industrial COBOT, FVT, Glue Dispensing Machine, Automatic Screw Fastening Machine, Interlinking Fixture, Auto Grippers, Screw Bowl Feeder, Conveyor, Pallets, Templates.

**[www.ajfindia.com](http://www.ajfindia.com)**



**+91-9112299343**

# RELIABLE SOLUTIONS FOR SPM JIGS AND FIXTURES



## About Our Company

At Amar Jigs and Fixtures, we are dedicated to revolutionizing the manufacturing industry through advanced automation solutions. With our expertise in jigs and fixtures design, development, and integration, we empower businesses to achieve unparalleled efficiency, accuracy, and productivity in their production processes.

### Our Mission

Amar jigs & fixtures is founded with the objective to be an engineering support company run by a team of highly skilled, experienced and competent professionals. We provide easy to use, manageable and scalable solutions with continuous support and development.

### Our Vision

We want to be continually known for our competency, reliability and expertise in the successful delivery of comprehensive manufacturing process solutions to our customers.



**+91-9112299343**

**Address:** Gat no. 293, Nagar Road, MIDC, Shikrapur.  
Tq: Shirur, Dist: pune, Maharastra-412208

# SPECIAL PURPOSE MACHINE



## Glue Dispensing Machine

Used for industrial adhesive fluid, glue dispensing and potting needs. Suitable for medical, electronics, LED, PCBA and other high-end industries



## Automated Box Build Line

We develop fully automated assembly line to avoid human intervention by enabling fast, stable and accurate flow.

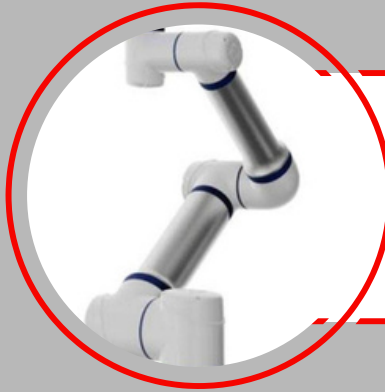
- Conveyors system to transfer parts
- Station wise traceability of system



## Automated Screw Fastening Machine

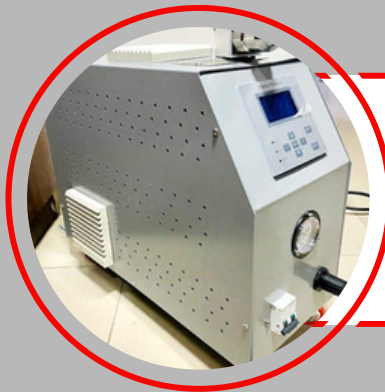
SFM automates the process of picking, driving and fastening screws during manufacturing. On some models, the screw driving arm is fixed and the component is moved towards the fixture where it can fasten the screws.

## Industrial COBOT (Robot)



Cobots are specifically designed to work alongside human employees and relieve them from tedious and difficult assembly jobs. This includes welding small pieces together, drilling screws, and similar assembly tasks

## Automated Plasma Processing Machine



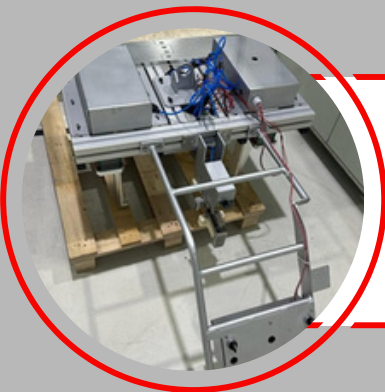
Elevate your manufacturing capabilities with AJF India's precision-engineered Automated Plasma Processing Machines, setting the standard for quality and efficiency.

## Handheld Screw Feeder



Efficiency at your fingertips – our Handheld Screw Feeder streamlines assembly tasks with precision and speed, enhancing your production workflow.

## Automated Grippers



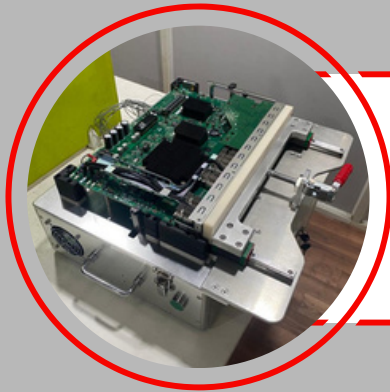
Revolutionize your automation processes with AJF India's Automated Grippers – engineered for precision and seamless integration in diverse industrial applications.

## Automated Thermal Glue Pasting Machine



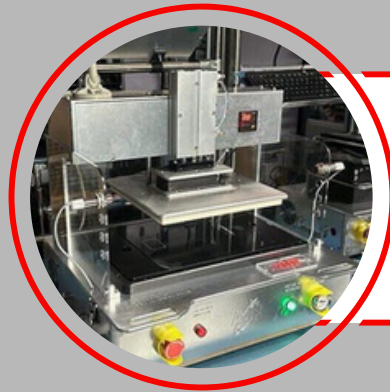
Elevate your adhesive application with precision and speed using our Glue Pasting Machine, designed for flawless performance in manufacturing processes.

## Automated Interlinking Fixture



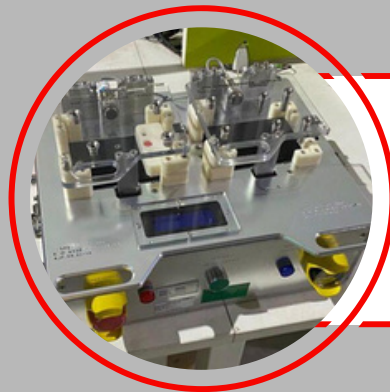
Achieve flawless assembly precision with Automated Interlinking Fixture, designed to optimize your production processes and ensure consistent quality in every step.

## Display Assembly Fixture



Enhance your display assembly processes with AJF India's specialized Display Assembly Fixtures, meticulously crafted for accuracy and efficiency in the manufacturing of electronic displays.

## Automated Pick to Light Fixture



Streamline your order picking processes with AJF India's Automated Pick to Light Fixture, designed for maximum efficiency and accuracy in warehouse and logistics operations.

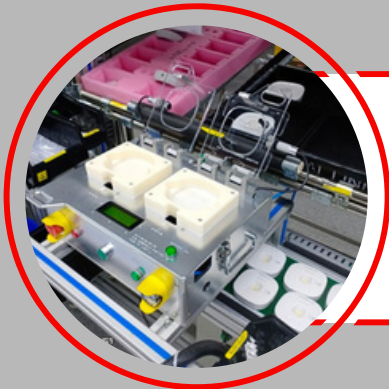


## Automated & Manual Conveyor



AJF India offers a comprehensive range of Conveyors, providing flexible solutions for material handling needs. Optimize your logistics and manufacturing workflows with our reliable conveyor systems.

## Automated Pick & Place



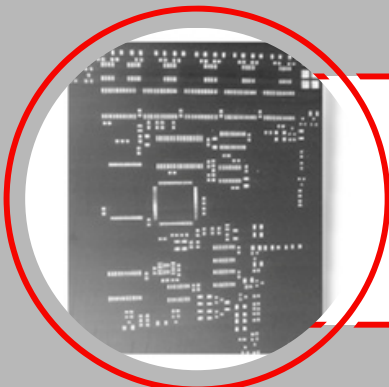
Pick and place automation speeds up the process of picking up parts or items and placing them in other locations. Automating this process helps to increase production rates

## Manual testing fixture



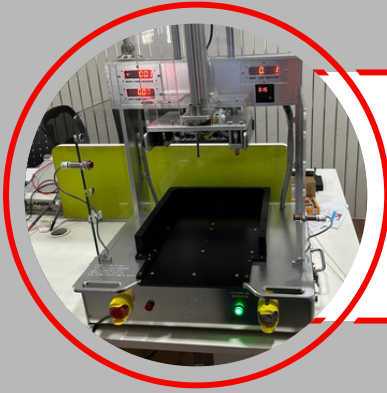
Manual testing fixtures serve as essential tools for quality control, allowing operators to perform precise assessments and verifications, ultimately contributing to the production of high-quality products.

## SMT Stencil



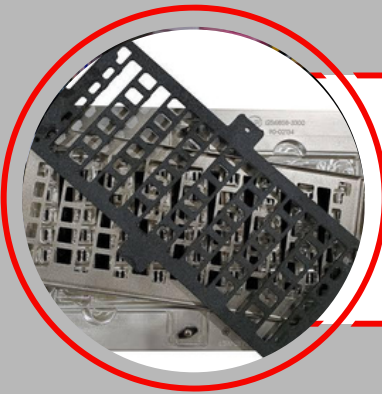
Your ultimate solution for precise SMT stencil fabrication. With cutting-edge technology and unmatched expertise, we guarantee optimal print quality for seamless PCB assembly

## Force Testing Fixture



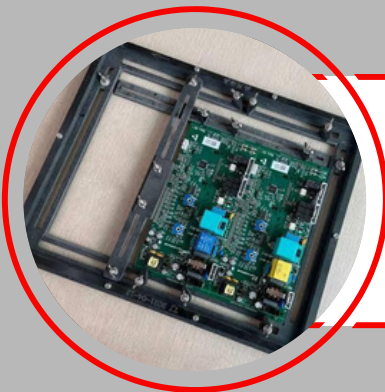
Precision-engineered to withstand the mightiest forces, our testing fixture ensures uncompromised durability and accurate measurements, every time.

## Router fixture



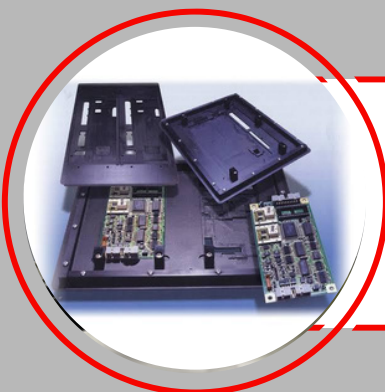
Router Fixtures are used to hold & avoid pcb damage while depanelising by using router machine. We are manufacturing for all machines.

## Universal Pallet



Universal wave solder pallets are designed to support a PCB that would otherwise be unable to be processed through wave soldering.

## Wave Solder Pallet



Wave solder pallets (also known as wave solder fixtures) are used during wave soldering on circuit boards that require thermal or solder protection. Wave solder pallets are custom for a particular job.

# AUTOMATED TEST EQUIPMENT

We provide Solutions for ATE, IC and FCT Testers, Test and Measurement applications and more! The device whose attributes are assessed by the ATE is usually referred to as the device under test (DUT), unit under test (UUT), or equipment under test (EUT).

Many electronic devices in use today are tested by ATE to ensure adequate performance, functionality, and the safety of those who will use, or directly and indirectly benefit from the use of, such devices.

Devices tested by ATE include integrated circuits (ICs), printed circuit boards (PCBs), hard disk drives (HDDs), systems and modules in automobiles, and the various electronic systems and line-replaceable units (LRUs) that support aircraft, spacecraft, and satellites, a family of technologies known as avionics.

## How is ATE useful and beneficial?

The overall purpose of ATE systems is to ensure that electronic devices perform and function as intended once they're in the customer's hands, which consequently prevents defective or faulty devices from entering the market.

If faults or defects are detected during testing, ATE also helps diagnose why, which allows manufacturers to finetune and make corrections where necessary before their devices are sent to customers.



# ATE

## ICT Fixture



- Catches manufacturing defects functional testing can miss
- Executes at powered off state – Safer
- Much faster fault isolation to specific components

## FVT Fixture



FVT can reveal design-for-manufacturing issues that may be difficult to identify through design reviews. As PCBs grow more complex, FCT helps ensure they function correctly when deployed in finished products.

## ATE Tester



ATE can include testing for electronics, hardware, software, semiconductors or avionics. We Provide:  
PCBA End of Line Tester  
ECU Functional Tester  
Battery Cell Simulator (BMS Tester)  
In-circuit Testers and Fixtures

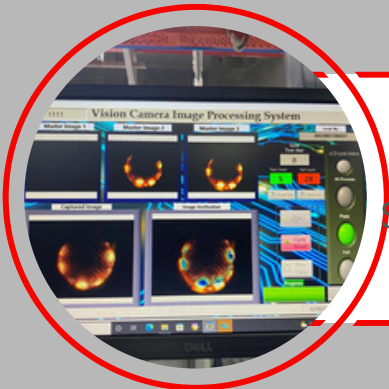
# LABVIEW PROGRAMMING AND TRACEABILITY SOLUTIONS

## Traceability Solutions



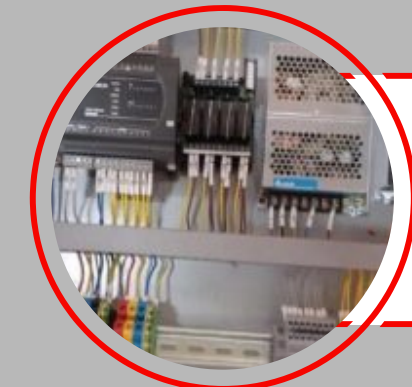
Tracing testing data is an essential part of manufacturing, as it allows to control the entire production process and ensure product integrity from the initial manufacturing stages to distribution.

## Vision System



Vision System developed for micro PCB assembly Using LabVIEW and plc. Vision System Can detect Color, code reading, OCR development and defect detection.

## PLC Services



- Siemens S7 PLC & HMI Programming.
- Mitsubishi PLC & HMI Programming.
- Delta PLC & HMI Programming.

# CONTACT US

+91-9112299343 | +91-9168340663

Gat no. 293, Nagar Road, MIDC, Shikrapur.  
Tq: Shirur, Dist: pune, Maharashtra-412208  
[ajfjigsfixture@gmail.com](mailto:ajfjigsfixture@gmail.com)

[www.ajfindia.com](http://www.ajfindia.com)